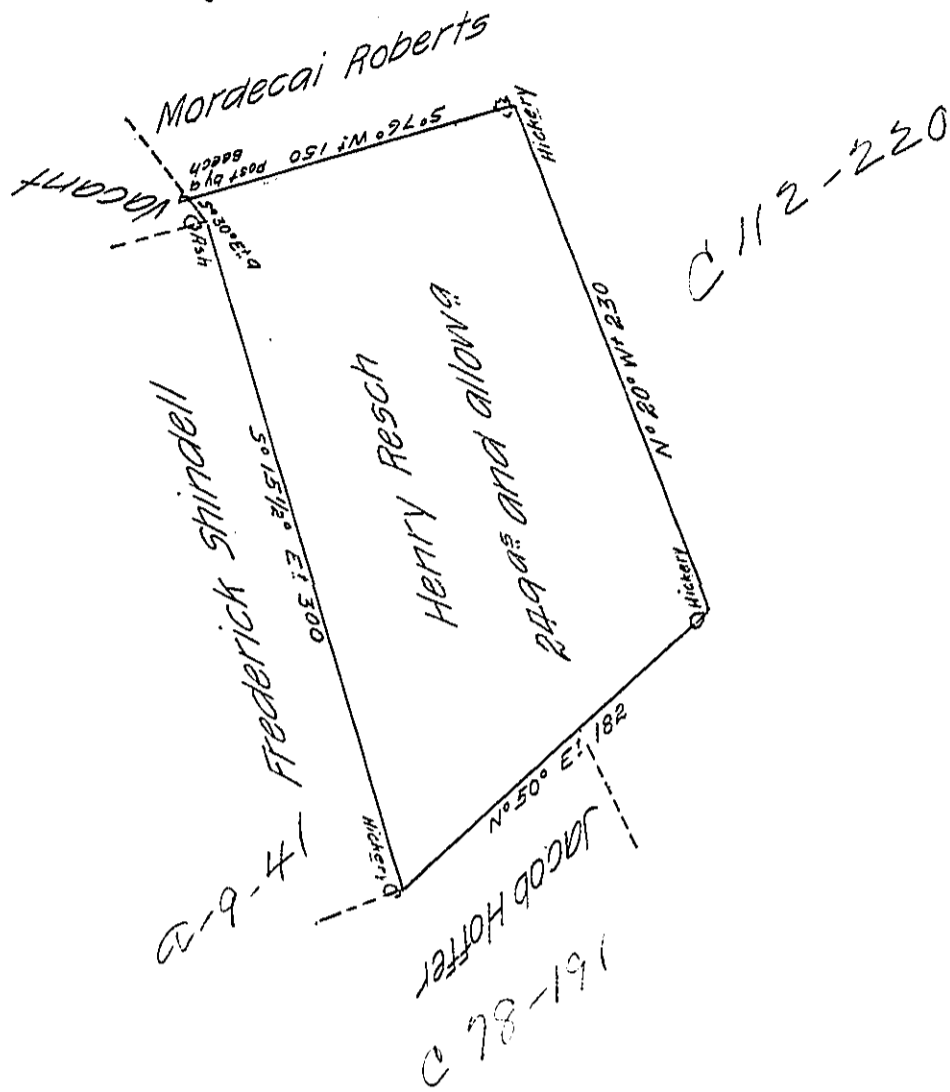


Page 106



A draught of a tract of land called Deerfield (being part of a larger tract of the same name) situate on the heads of a run called Laurel Run about two or three miles eastward of Stony Creek adjoining land of Jacob Hoffer Frederick Shindell and others in Brothers Valley Township in the County of Bedford containing two hundred & forty nine acres and the usual allowance of six per cent for roads &c.

Surveyed the sixteenth and seventeenth days of May 1774 for Henry Resch in pursuance of a warrant dated the twentieth day of Decemr 1773 by

To John Lukens Esq.
Surveyor General

Thomas Smith D.S.

IN TESTIMONY that the above is a copy of the original remaining on file in the Department of Internal Affairs of Pennsylvania, made conformably to an Act of Assembly approved the 16th day of February, 1833, I have hereunto set my Hand and caused the Seal of said Department to be affixed at Harrisburg, this thirteenth day of JULY 1906

George Brown
Secretary of Internal Affairs.